



**2022**  
**Product**  
**CATALOGUE**



**Best things in life are free from™**

### **Kinnikinnick's Promise**

Crafting safe and scrumptious gluten-free baking since 1991, also **free from** dairy, nuts, peanuts and soy. Still family-owned, we're loved the world-over by those with celiac disease and on restricted diets.



Share the Best Things In Life with your family and friends, free from risk and worry.





## GROCERY AISLE

### COOKIES ... 3

S'moreables® Graham Style Crackers  
 Vanilla Wafers  
 Montanas Chocolate Chip  
 Ginger Snap  
 KinniTOOS® Birthday Sandwich Crème  
 KinniTOOS® Mint Magic Sandwich Crème  
 KinniTOOS® CinnaBunFun Sandwich Crème  
 KinniTOOS® Chocolate Sandwich Crème  
 KinniTOOS® Vanilla Sandwich Crème  
 KinniTOOS® Fudge Sandwich Crème  
 KinniKritters® Chocolate Animal  
 KinniKritters® Graham Style Animal  
 KinniKritters® Vanilla Animal



### MIXES ... 6

Pancake & Waffle  
 Angel Food Cake  
 Chocolate Cake  
 White Cake  
 All Purpose Flour Blend



### CROUTONS AND STUFFING MIX ... 8

Herb & Garlic Croutons  
 Traditional Stuffing Mix



### BAKING PRODUCTS ... 9

Panko Style Bread Crumbs  
 Graham Style Crumbs  
 Chocolate Cookie Crumbs



### BREADS ... 10

White Wide Loaf  
 Seeded Wide Loaf  
 White  
 Multigrain  
 Whole Grain  
 Cinnamon Raisin

## FREEZER



### BUNS & ROLLS ... 12

Hamburger  
 Hotdog  
 Artisan Dinner Rolls  
 Traditional English Muffins  
 English Muffins

### BAGELS ... 14

Plain  
 Cinnamon Raisin  
 Blueberry



### DONUTS ... 15

**Coming soon!** Powdered Sugar  
**Coming soon!** Cookies & Cream  
 Chocolate Dipped  
 Cinnamon Sugar  
 Vanilla Glazed  
 Maple Glazed

### CRUSTS ... 17

Pizza  
 Flatbread  
 Pie



### MUFFINS ... 18

Chocolate Chip  
 Lemon Blueberry  
 Quinoa Spice



### WAFFLES ... 19

Original Homestyle  
 Cinnamon Brown  
 Sugar Homestyle  
 Blueberry Homestyle



Kinnikinnick Foods Inc. 10940-120 St. NW Edmonton Alberta, Canada T5H 3P7

Toll free: +1 (877) 503-4466 Kinnikinnick.com info@kinnikinnick.com

Twitter Instagram Facebook Pinterest @KinnikinnickGF Product of Canada

# GROCERY AISLE COOKIES



We're proud to change lives, one cookie at a time: Ours have been the most popular gluten-free favorites for decades, bringing you return store visits from loyal customers & new ones, seeking scrumptious allergy-friendly snacks.

## S'moreables® Graham Style Crackers



### Nutrition Facts

about 7 servings per container  
Serving size 2 crackers (32g)

Amount per serving	
<b>Calories</b>	<b>150</b>
% Daily Value*	
<b>Total Fat</b> 5g	<b>6%</b>
Saturated Fat 2.5g	<b>13%</b>
Trans Fat 0g	
<b>Cholesterol</b> 0mg	<b>0%</b>
<b>Sodium</b> 130mg	<b>6%</b>
<b>Total Carbohydrate</b> 24g	<b>9%</b>
Dietary Fiber 1g	<b>4%</b>
Total Sugars 7g	
Includes 7g Added Sugars	<b>14%</b>
<b>Protein</b> 1g	
Vitamin D 0mcg	0%
Calcium 30mg	2%
Iron 0.4mg	2%
Potassium 70mg	2%

\* The % Daily Value (DV) tells you how much a nutrient in a serving of food contributes to a daily diet. 2,000 calories a day is used for general nutrition advice.

**INGREDIENTS:** Pea starch, non-hydrogenated shortening (palm oil)†, brown rice flour, potato starch\*, brown sugar\*, sweet rice flour, tapioca starch, water, cane sugar, tapioca syrup, rice bran, molasses\*, salt, sodium bicarbonate, pea protein, natural flavor, pea fiber, inulin, sunflower lecithin, mono calcium phosphate, modified cellulose, guar gum.

**May contain:** Egg

\*Not a product of genetic engineering  
†RSPD Certified

**INSTRUCTIONS:** Store in a sealed container in a cool, dry place.



NET WT 8 OZ. 220g

Pack: 6 per case

Unit Dim.: 7.5"H 5.5"W 1.75"D

Shelf Life: 365 days



## Vanilla Wafers



### Nutrition Facts

about 5 servings per container  
Serving size 8 wafers (36g)

Amount per serving	
<b>Calories</b>	<b>160</b>
% Daily Value*	
<b>Total Fat</b> 5g	<b>6%</b>
Saturated Fat 2.5g	<b>13%</b>
Trans Fat 0g	
<b>Cholesterol</b> 0mg	<b>0%</b>
<b>Sodium</b> 130mg	<b>6%</b>
<b>Total Carbohydrate</b> 27g	<b>10%</b>
Dietary Fiber 1g	<b>4%</b>
Total Sugars 10g	
Includes 9g Added Sugars	<b>18%</b>
<b>Protein</b> 1g	
Vitamin D 0mcg	0%
Calcium 10mg	0%
Iron 0mg	0%
Potassium 20mg	0%

\* The % Daily Value (DV) tells you how much a nutrient in a serving of food contributes to a daily diet. 2,000 calories a day is used for general nutrition advice.

**INGREDIENTS:** Cane sugar, egg whites, white rice flour, potato starch\*, non-hydrogenated shortening (palm oil)†, pea starch, tapioca starch, cellulose, water, tapioca syrup, natural flavors, salt, leavening (sodium acid pyrophosphate, sodium bicarbonate, pea starch, mono calcium phosphate), modified cellulose, sunflower lecithin, beta-carotene [color].

\*Not a product of genetic engineering  
†RSPD Certified

**INSTRUCTIONS:** Store in a sealed container in a cool, dry place.



NET WT 6.3 OZ. 180g

Pack: 6 per case

Unit Dim.: 7.5"H 5.5"W 1.75"D

Shelf Life: 365 days



## Montanas Chocolate Chip



### Nutrition Facts

about 7 servings per container  
Serving size 4 cookies (33g)

Amount per serving	
<b>Calories</b>	<b>160</b>
% Daily Value*	
<b>Total Fat</b> 7g	<b>9%</b>
Saturated Fat 3.5g	<b>18%</b>
Trans Fat 0g	
<b>Cholesterol</b> 0mg	<b>0%</b>
<b>Sodium</b> 160mg	<b>7%</b>
<b>Total Carbohydrate</b> 23g	<b>8%</b>
Dietary Fiber 1g	<b>4%</b>
Total Sugars 12g	
Includes 12g Added Sugars	<b>24%</b>
<b>Protein</b> 1g	
Vitamin D 0mcg	0%
Calcium 10mg	0%
Iron 1.3mg	8%
Potassium 50mg	0%

\* The % Daily Value (DV) tells you how much a nutrient in a serving of food contributes to a daily diet. 2,000 calories a day is used for general nutrition advice.

**INGREDIENTS:** Chocolate chips (sugar\*, cocoa mass, cocoa butter, sunflower lecithin, natural flavor), pea starch, palm oil†, brown sugar\*, rice flour, water, cane sugar, potato starch\*, pea protein, dextrose\*, natural flavor, salt, canola oil\*, leavening (sodium acid pyrophosphate, sodium bicarbonate, pea starch, mono calcium phosphate), modified cellulose, sunflower lecithin, pea fiber.

**May contain:** Egg

\*Not a product of genetic engineering  
†RSPD Certified

**INSTRUCTIONS:** Store in a sealed container in a cool, dry place.



NET WT 8 OZ. 220g

Pack: 6 per case

Unit Dim.: 7.5"H 5.25"W 2.25"D

Shelf Life: 365 days





## Ginger Snap



### Nutrition Facts

about 6 servings per container  
Serving size 4 cookies (32g)

Amount per serving	
<b>Calories</b>	<b>150</b>
% Daily Value*	
<b>Total Fat</b> 6g	<b>8%</b>
Saturated Fat 3g	<b>15%</b>
Trans Fat 0g	
<b>Cholesterol</b> 10mg	<b>3%</b>
<b>Sodium</b> 150mg	<b>7%</b>
<b>Total Carbohydrate</b> 23g	<b>8%</b>
Dietary Fiber 1g	<b>4%</b>
Total Sugars 10g	
Includes 9g Added Sugars	<b>18%</b>
<b>Protein</b> 1g	
Vitamin D 0mcg	0%
Calcium 26mg	2%
Iron 1mg	4%
Potassium 45mg	0%

\* The % Daily Value (DV) tells you how much a nutrient in a serving of food contributes to a daily diet. 2,000 calories a day is used for general nutrition advice.

#### INGREDIENTS:

Cane sugar, white rice flour, non-hydrogenated shortening (palm oil)†, potato starch\*, whole eggs, tapioca starch, molasses\*, water, ginger, salt, cinnamon, modified cellulose, sodium bicarbonate, allspice.

\*Not a product of genetic engineering

†RSPO Certified

**INSTRUCTIONS:** Store in a sealed container in a cool, dry place.



NET WT 7 OZ. 190g  
Pack: 6 per case  
Unit Dim.: 8.25"H 5.25"W 2.25"D  
Shelf Life: 240 days

**Vegan**

## KinniTOOS® Birthday Sandwich Crème



### Nutrition Facts

about 8 servings per container  
Serving size 2 cookies (30g)

Amount per serving	
<b>Calories</b>	<b>150</b>
% Daily Value*	
<b>Total Fat</b> 6g	<b>8%</b>
Saturated Fat 3g	<b>15%</b>
Trans Fat 0g	
<b>Cholesterol</b> 0mg	<b>0%</b>
<b>Sodium</b> 55mg	<b>2%</b>
<b>Total Carbohydrate</b> 22g	<b>8%</b>
Dietary Fiber 1g	<b>4%</b>
Total Sugars 13g	
Includes 13g Added Sugars	<b>26%</b>
<b>Protein</b> 1g	
Vitamin D 0mcg	0%
Calcium 10mg	0%
Iron 2.8mg	15%
Potassium 130mg	2%

\* The % Daily Value (DV) tells you how much a nutrient in a serving of food contributes to a daily diet. 2,000 calories a day is used for general nutrition advice.

**INGREDIENTS:** Cane sugar, palm oil†, pea starch, potato starch\*, rice flour, cocoa powder, water, tapioca starch, tapioca syrup, pea protein, natural flavor, salt, pea fiber, sunflower lecithin, gum arabic, inulin, sodium bicarbonate, modified cellulose, spirulina extract, red cabbage extract, turmeric extract, radish extract.

**May contain:** Egg

\*Not a product of genetic engineering

†RSPO Certified

**INSTRUCTIONS:** Store in a sealed container in a cool, dry place.



NET WT 8 OZ. 220g  
Pack: 6 per case  
Unit Dim.: 7.5"H 5.5"W 1.75"D  
Shelf Life: 365 days

**Vegan**

## KinniTOOS® Mint Magic Sandwich Crème



### Nutrition Facts

about 8 servings per container  
Serving size 2 cookies (30g)

Amount per serving	
<b>Calories</b>	<b>150</b>
% Daily Value*	
<b>Total Fat</b> 6g	<b>8%</b>
Saturated Fat 3g	<b>15%</b>
Trans Fat 0g	
<b>Cholesterol</b> 0mg	<b>0%</b>
<b>Sodium</b> 55mg	<b>2%</b>
<b>Total Carbohydrate</b> 22g	<b>8%</b>
Dietary Fiber 1g	<b>4%</b>
Total Sugars 13g	
Includes 13g Added Sugars	<b>26%</b>
<b>Protein</b> 1g	
Vitamin D 0mcg	0%
Calcium 10mg	0%
Iron 2.8mg	15%
Potassium 130mg	2%

\* The % Daily Value (DV) tells you how much a nutrient in a serving of food contributes to a daily diet. 2,000 calories a day is used for general nutrition advice.

**INGREDIENTS:** Cane sugar, palm oil†, pea starch, potato starch\*, rice flour, cocoa powder, water, tapioca starch, tapioca syrup, pea protein, natural flavor, salt, pea fiber, sunflower lecithin, gum arabic, inulin, sodium bicarbonate, modified cellulose, spirulina extract.

**May contain:** Egg

\*Not a product of genetic engineering

†RSPO Certified

**INSTRUCTIONS:** Store in a sealed container in a cool, dry place.



NET WT 8 OZ. 220g  
Pack: 6 per case  
Unit Dim.: 7.5"H 5.5"W 1.75"D  
Shelf Life: 365 days

**Vegan**

## KinniTOOS® CinnaBunFun Sandwich Crème



### Nutrition Facts

about 8 servings per container  
Serving size 2 cookies (30g)

Amount per serving	
<b>Calories</b>	<b>150</b>
% Daily Value*	
<b>Total Fat</b> 6g	<b>8%</b>
Saturated Fat 3g	<b>15%</b>
Trans Fat 0g	
<b>Cholesterol</b> 0mg	<b>0%</b>
<b>Sodium</b> 50mg	<b>2%</b>
<b>Total Carbohydrate</b> 23g	<b>8%</b>
Dietary Fiber 0g	<b>0%</b>
Total Sugars 12g	
Includes 11g Added Sugars	<b>22%</b>
<b>Protein</b> 0g	
Vitamin D 0mcg	0%
Calcium 10mg	0%
Iron 0.1mg	0%
Potassium 20mg	0%

\* The % Daily Value (DV) tells you how much a nutrient in a serving of food contributes to a daily diet. 2,000 calories a day is used for general nutrition advice.

**INGREDIENTS:** Cane sugar, palm oil†, rice flour, pea starch, potato starch\*, tapioca starch, brown sugar\*, water, cinnamon, tapioca syrup, molasses, pea protein, salt, sunflower lecithin, pea fiber, natural flavor, ginger, inulin, baking soda, modified cellulose, beta carotene.

**May contain:** Egg

\*Not a product of genetic engineering

†RSPO Certified

**INSTRUCTIONS:** Store in a sealed container in a cool, dry place.



NET WT 8 OZ. 220g  
Pack: 6 per case  
Unit Dim.: 7.5"H 5.5"W 1.75"D  
Shelf Life: 365 days

**Vegan**

# KinniTOOS® Chocolate Sandwich Crème



## Nutrition Facts

about 6 servings per container  
Serving size 3 cookies (37g)

Amount per serving	
<b>Calories</b>	<b>180</b>
% Daily Value*	
<b>Total Fat</b> 7g	<b>9%</b>
Saturated Fat 3.5g	<b>18%</b>
Trans Fat 0g	
<b>Cholesterol</b> 0mg	<b>0%</b>
<b>Sodium</b> 110mg	<b>5%</b>
<b>Total Carbohydrate</b> 27g	<b>10%</b>
Dietary Fiber 1g	<b>4%</b>
Total Sugars 14g	
Includes 12g Added Sugars	<b>24%</b>
<b>Protein</b> 1g	
Vitamin D 0mcg	0%
Calcium 10mg	0%
Iron 1.3mg	8%
Potassium 70mg	2%

\* The % Daily Value (DV) tells you how much a nutrient in a serving of food contributes to a daily diet. 2,000 calories a day is used for general nutrition advice.

**INGREDIENTS:** Cane sugar, non-hydrogenated shortening (palm oil)†, pea starch, potato starch\*, white rice flour, cocoa powder, tapioca starch, water, tapioca syrup, pea protein, salt, natural flavor, pea fiber, sunflower lecithin, inulin, sodium bicarbonate, modified cellulose.

**May contain:** Egg

\*Not a product of genetic engineering

†RSPD Certified

**INSTRUCTIONS:** Store in a sealed container in a cool, dry place.



NET WT 8 OZ. 220g

Pack: 6 per case

Unit Dim.: 7.5"H 5.5"W 1.75"D

Shelf Life: 365 days



# KinniTOOS® Vanilla Sandwich Crème



## Nutrition Facts

about 6 servings per container  
Serving size 3 cookies (37g)

Amount per serving	
<b>Calories</b>	<b>180</b>
% Daily Value*	
<b>Total Fat</b> 8g	<b>10%</b>
Saturated Fat 3.5g	<b>18%</b>
Trans Fat 0g	
<b>Cholesterol</b> 0mg	<b>0%</b>
<b>Sodium</b> 60mg	<b>3%</b>
<b>Total Carbohydrate</b> 28g	<b>10%</b>
Dietary Fiber 0g	<b>0%</b>
Total Sugars 13g	
Includes 12g Added Sugars	<b>24%</b>
<b>Protein</b> 0g	
Vitamin D 0mcg	0%
Calcium 10mg	0%
Iron 0mg	0%
Potassium 10mg	0%

\* The % Daily Value (DV) tells you how much a nutrient in a serving of food contributes to a daily diet. 2,000 calories a day is used for general nutrition advice.

**INGREDIENTS:** Cane sugar, non-hydrogenated shortening (palm oil)†, pea starch, white rice flour, potato starch\*, tapioca starch, water, tapioca syrup, pea protein, salt, sunflower lecithin, natural flavor, pea fiber, inulin, sodium bicarbonate, modified cellulose, beta-carotene (color).

**May contain:** Egg

\*Not a product of genetic engineering

†RSPD Certified

**INSTRUCTIONS:** Store in a sealed container in a cool, dry place.



NET WT 8 OZ. 220g

Pack: 6 per case

Unit Dim.: 7.5"H 5.5"W 1.75"D

Shelf Life: 365 days



# KinniTOOS® Fudge Sandwich Crème



## Nutrition Facts

about 6 servings per container  
Serving size 3 cookies (37g)

Amount per serving	
<b>Calories</b>	<b>180</b>
% Daily Value*	
<b>Total Fat</b> 8g	<b>10%</b>
Saturated Fat 4g	<b>20%</b>
Trans Fat 0g	
<b>Cholesterol</b> 0mg	<b>0%</b>
<b>Sodium</b> 65mg	<b>3%</b>
<b>Total Carbohydrate</b> 27g	<b>10%</b>
Dietary Fiber 1g	<b>4%</b>
Total Sugars 12g	
Includes 12g Added Sugars	<b>24%</b>
<b>Protein</b> 1g	
Vitamin D 0mcg	0%
Calcium 9mg	0%
Iron 1mg	6%
Potassium 89mg	2%

\* The % Daily Value (DV) tells you how much a nutrient in a serving of food contributes to a daily diet. 2,000 calories a day is used for general nutrition advice.

**INGREDIENTS:** Cane sugar, non-hydrogenated shortening (palm oil)†, pea starch, white rice flour, potato starch\*, cocoa powder, tapioca starch, water, tapioca syrup, pea protein, salt, sunflower lecithin, natural flavor, pea fiber, inulin, sodium bicarbonate, modified cellulose.

**May contain:** Egg

\*Not a product of genetic engineering

†RSPD Certified

**INSTRUCTIONS:** Store in a sealed container in a cool, dry place.



NET WT 8 OZ. 220g

Pack: 6 per case

Unit Dim.: 7.5"H 5.5"W 1.75"D

Shelf Life: 365 days



# KinniKritters® Chocolate Animal



## Nutrition Facts

about 7 servings per container  
Serving size 12 cookies (30g)

Amount per serving	
<b>Calories</b>	<b>140</b>
% Daily Value*	
<b>Total Fat</b> 5g	<b>6%</b>
Saturated Fat 2.5g	<b>13%</b>
Trans Fat 0g	
<b>Cholesterol</b> 0mg	<b>0%</b>
<b>Sodium</b> 105mg	<b>5%</b>
<b>Total Carbohydrate</b> 23g	<b>8%</b>
Dietary Fiber 1g	<b>4%</b>
Total Sugars 7g	
Includes 6g Added Sugars	<b>12%</b>
<b>Protein</b> 1g	
Vitamin D 0mcg	0%
Calcium 10mg	0%
Iron 1mg	6%
Potassium 60mg	2%

\* The % Daily Value (DV) tells you how much a nutrient in a serving of food contributes to a daily diet. 2,000 calories a day is used for general nutrition advice.

**INGREDIENTS:** Cane sugar, pea starch, potato starch\*, non-hydrogenated shortening (palm oil)†, white rice flour, water, tapioca starch, cocoa powder, tapioca syrup, pea protein, modified cellulose, salt, natural flavor, pea fiber, inulin, sunflower lecithin, sodium bicarbonate.

**May contain:** Egg

\*Not a product of genetic engineering

†RSPD Certified

**INSTRUCTIONS:** Store in a sealed container in a cool, dry place.



NET WT 8 OZ. 220g

Pack: 6 per case

Unit Dim.: 7.5"H 5.5"W 1.75"D

Shelf Life: 365 days



# Kinnikritters® Graham Style Animal



## Nutrition Facts

about 7 servings per container  
Serving size 12 cookies (30g)

Amount per serving	
<b>Calories</b>	<b>140</b>
% Daily Value*	
<b>Total Fat</b> 5g	<b>6%</b>
Saturated Fat 2.5g	<b>13%</b>
Trans Fat 0g	
<b>Cholesterol</b> 0mg	<b>0%</b>
<b>Sodium</b> 125mg	<b>5%</b>
<b>Total Carbohydrate</b> 23g	<b>8%</b>
Dietary Fiber 1g	<b>4%</b>
Total Sugars 7g	
Includes 6g Added Sugars	<b>12%</b>
<b>Protein</b> 1g	
Vitamin D 0mcg	0%
Calcium 30mg	2%
Iron 0.4mg	2%
Potassium 60mg	1%

\* The % Daily Value (DV) tells you how much a nutrient in a serving of food contributes to a daily diet. 2,000 calories a day is used for general nutrition advice.

**INGREDIENTS:** Pea starch, non-hydrogenated shortening (palm oil)†, brown rice flour, potato starch\*, brown sugar\*, sweet rice flour, tapioca starch, water, cane sugar, tapioca syrup, rice bran, molasses\*, salt, sodium bicarbonate, pea protein, natural flavor, pea fiber, inulin, sunflower lecithin, mono calcium phosphate, modified cellulose, guar gum.

**May contain:** Egg

\*Not a product of genetic engineering

†RSPO Certified

**INSTRUCTIONS:** Store in a sealed container in a cool, dry place.



NET WT 8 OZ. 220g  
Pack: 6 per case  
Unit Dim.: 7.5"H 5.5"W 1.75"D  
Shelf Life: 365 days

**Vegan**

# Kinnikritters® Vanilla Animal



## Nutrition Facts

about 7 servings per container  
Serving size 12 cookies (30g)

Amount per serving	
<b>Calories</b>	<b>140</b>
% Daily Value*	
<b>Total Fat</b> 4.5g	<b>6%</b>
Saturated Fat 2g	<b>10%</b>
Trans Fat 0g	
<b>Cholesterol</b> 0mg	<b>0%</b>
<b>Sodium</b> 85mg	<b>4%</b>
<b>Total Carbohydrate</b> 24g	<b>9%</b>
Dietary Fiber 0g	<b>0%</b>
Total Sugars 7g	
Includes 7g Added Sugars	<b>14%</b>
<b>Protein</b> 1g	
Vitamin D 0mcg	0%
Calcium 10mg	1%
Iron 0mg	0%
Potassium 10mg	0%

\* The % Daily Value (DV) tells you how much a nutrient in a serving of food contributes to a daily diet. 2,000 calories a day is used for general nutrition advice.

**INGREDIENTS:** Cane sugar, pea starch, potato starch\*, non-hydrogenated shortening (palm oil)†, white rice flour, tapioca starch, water, tapioca syrup, pea protein, salt, pea fiber, natural flavor, modified cellulose, inulin, sodium bicarbonate, sunflower lecithin, beta-carotene (color).

**May contain:** Egg

\*Not a product of genetic engineering

†RSPO Certified

**INSTRUCTIONS:** Store in a sealed container in a cool, dry place.



NET WT 8 OZ. 220g  
Pack: 6 per case  
Unit Dim.: 7.5"H 5.5"W 1.75"D  
Shelf Life: 365 days

**Vegan**



# GROCERY AISLE MIXES



Baked for sharing, our mixes are so good most people can't tell they're gluten-free. Pancake & Waffle Mix is a must-have, because families love it, allergic or not. Rachel Ray's Magazine tried 'em all and voted ours the best on the market.



# Pancake & Waffle



## Nutrition Facts

about 11 servings per container  
Serving size 1/3 cup (40g)

Amount per serving	
<b>Calories</b>	<b>140</b>
% Daily Value*	
<b>Total Fat</b> 0g	<b>0%</b>
Saturated Fat 0g	<b>0%</b>
Trans Fat 0g	
<b>Cholesterol</b> 0mg	<b>0%</b>
<b>Sodium</b> 480mg	<b>21%</b>
<b>Total Carbohydrate</b> 33g	<b>12%</b>
Dietary Fiber 1g	<b>4%</b>
Total Sugars 7g	
Includes 7g Added Sugars	<b>14%</b>
<b>Protein</b> 2g	
Vitamin D 0mcg	0%
Calcium 22mg	2%
Iron 0.2mg	2%
Potassium 88mg	2%

\* The % Daily Value (DV) tells you how much a nutrient in a serving of food contributes to a daily diet. 2,000 calories a day is used for general nutrition advice.

**INGREDIENTS:** Pea starch, white rice flour, cane sugar, tapioca starch, dextrose\*, chickpea flour, leavening (sodium acid pyrophosphate, sodium bicarbonate, pea starch, mono calcium phosphate), inulin, pea protein, corn starch\*, pea fiber, salt, cream of tartar, sodium bicarbonate, modified cellulose, natural flavor.

**May contain:** Egg

\*Not a product of genetic engineering

**INSTRUCTIONS:** Store in a sealed container in a cool, dry place.



NET WT 16 OZ. 454g  
Pack: 6 per case  
Unit Dim.: 7.5"H 5.5"W 1.75"D  
Shelf Life: 365 days

**Vegan**



## Angel Food Cake



### Nutrition Facts

about 10 servings per container  
**Serving size 3 tbsp (45g)**

Amount per serving	
<b>Calories</b>	<b>170</b>
% Daily Value*	
<b>Total Fat</b> 0g	<b>0%</b>
Saturated Fat 0g	<b>0%</b>
Trans Fat 0g	
<b>Cholesterol</b> 0mg	<b>0%</b>
<b>Sodium</b> 25mg	<b>1%</b>
<b>Total Carbohydrate</b> 42g	<b>15%</b>
Dietary Fiber 0g	<b>0%</b>
Total Sugars 28g	
Includes 27g Added Sugars	<b>54%</b>
<b>Protein</b> 0g	
Vitamin D 0mcg	0%
Calcium 5mg	1%
Iron 0mg	0%
Potassium 112mg	2%

\* The % Daily Value (DV) tells you how much a nutrient in a serving of food contributes to a daily diet. 2,000 calories a day is used for general nutrition advice.

#### INGREDIENTS:

Cane sugar, potato starch\*, white rice flour, cream of tartar, salt.

**May contain:** Egg

\*Not a product of genetic engineering

## Chocolate Cake



### Nutrition Facts

about 15 servings per container  
**Serving size 3 tbsp (33g)**

Amount per serving	
<b>Calories</b>	<b>120</b>
% Daily Value*	
<b>Total Fat</b> 1g	<b>1%</b>
Saturated Fat 0g	<b>0%</b>
Trans Fat 0g	
<b>Cholesterol</b> 0mg	<b>0%</b>
<b>Sodium</b> 280mg	<b>12%</b>
<b>Total Carbohydrate</b> 28g	<b>10%</b>
Dietary Fiber 1g	<b>4%</b>
Total Sugars 16g	
Includes 15g Added Sugars	<b>30%</b>
<b>Protein</b> 1g	
Vitamin D 0mcg	0%
Calcium 8mg	1%
Iron 1mg	6%
Potassium 116mg	2%

\* The % Daily Value (DV) tells you how much a nutrient in a serving of food contributes to a daily diet. 2,000 calories a day is used for general nutrition advice.

#### INGREDIENTS:

Cane sugar, potato starch\*, white rice flour, cocoa powder, sweet rice flour, leavening (sodium acid pyrophosphate, sodium bicarbonate, pea starch, mono calcium phosphate), salt, pea protein, sodium bicarbonate, modified cellulose, pea starch.

**May contain:** Egg

\*Not a product of genetic engineering

## White Cake



### Nutrition Facts

about 15 servings per container  
**Serving size 3 tbsp (33g)**

Amount per serving	
<b>Calories</b>	<b>120</b>
% Daily Value*	
<b>Total Fat</b> 0g	<b>0%</b>
Saturated Fat 0g	<b>0%</b>
Trans Fat 0g	
<b>Cholesterol</b> 0mg	<b>0%</b>
<b>Sodium</b> 410mg	<b>18%</b>
<b>Total Carbohydrate</b> 29g	<b>11%</b>
Dietary Fiber 0g	<b>0%</b>
Total Sugars 15g	
Includes 14g Added Sugars	<b>28%</b>
<b>Protein</b> 1g	
Vitamin D 0mcg	0%
Calcium 10mg	1%
Iron 0mg	0%
Potassium 13mg	1%

\* The % Daily Value (DV) tells you how much a nutrient in a serving of food contributes to a daily diet. 2,000 calories a day is used for general nutrition advice.

#### INGREDIENTS:

Cane sugar, potato starch\*, white rice flour, sweet rice flour, leavening (sodium acid pyrophosphate, sodium bicarbonate, pea starch, mono calcium phosphate), salt, pea protein, sodium bicarbonate, modified cellulose, pea starch.

**May contain:** Egg

\*Not a product of genetic engineering

## All Purpose Flour Blend



### Nutrition Facts

about 15 servings per container  
**Serving size 3 tbsp (30g)**

Amount per serving	
<b>Calories</b>	<b>100</b>
% Daily Value*	
<b>Total Fat</b> 0g	<b>0%</b>
Saturated Fat 0g	<b>0%</b>
Trans Fat 0g	
<b>Cholesterol</b> 0mg	<b>0%</b>
<b>Sodium</b> 15mg	<b>1%</b>
<b>Total Carbohydrate</b> 25g	<b>9%</b>
Dietary Fiber 1g	<b>4%</b>
Total Sugars 0g	
Includes 0g Added Sugars	<b>0%</b>
<b>Protein</b> 1g	
Vitamin D 0mcg	0%
Calcium 5mg	1%
Iron 0mg	0%
Potassium 21mg	1%

\* The % Daily Value (DV) tells you how much a nutrient in a serving of food contributes to a daily diet. 2,000 calories a day is used for general nutrition advice.

#### INGREDIENTS:

White rice flour, potato starch\*, tapioca starch, guar gum, modified cellulose.

**May contain:** Egg

\*Not a product of genetic engineering

**INSTRUCTIONS:** Store in a sealed container in a cool, dry place.



NET WT 15.9 OZ. 450g

Pack: 6 per case

Unit Dim.: 7.5"H 5.5"W 1.75"D

Shelf Life: 365 days

**Vegan**



NET WT 17.6 OZ. 500g

Pack: 6 per case

Unit Dim.: 7.5"H 5.5"W 1.75"D

Shelf Life: 365 days

**Vegan**



NET WT 17.6 OZ. 500g

Pack: 6 per case

Unit Dim.: 7.5"H 5.5"W 1.75"D

Shelf Life: 365 days

**Vegan**



NET WT 16 OZ. 454g

Pack: 6 per case

Unit Dim.: 7.5"H 5.5"W 1.75"D

Shelf Life: 365 days

## GROCERY AISLE

## CROUTONS AND STUFFING MIX



Excite you salads with a crunch of garlic and herbs. Our famous bread got a makeover that'll turn a plain bowl into something special.

Our Traditional Stuffing Mix takes minutes on the stove. Or turn it into a gourmet dish using family-favorite recipes.



### Herb & Garlic Croutons



Nutrition Facts	
about 20 servings per container	
Serving size about 8 pieces (7g)	
Amount per serving	
<b>Calories</b>	<b>30</b>
% Daily Value*	
<b>Total Fat</b> 1g	1%
Saturated Fat 0g	0%
Trans Fat 0g	
<b>Cholesterol</b> 0mg	0%
<b>Sodium</b> 80mg	3%
<b>Total Carbohydrate</b> 6g	2%
Dietary Fiber 0g	0%
Total Sugars 0g	
Includes <1g Added Sugars	0%
<b>Protein</b> 0g	
Vitamin D 0mcg	0%
Calcium 10mg	0%
Iron 0.2mg	2%
Potassium 15mg	0%
Thiamin 0.05mg	6%
Riboflavin 0.03mg	4%
Niacin 0.5mg	4%
Folate 10mcg DFE (6 mcg folic acid)	4%

**INGREDIENTS:** Gluten-free flour blend (modified tapioca starch, potato starch\*, rice flour, rice starch), water, high oleic canola oil\*, cane sugar, yeast, spices, salt, modified cellulose, psyllium, milled flaxseed, cultured corn syrup solids\*, citric acid, vitamins and mineral blend (niacin, iron, thiamin, riboflavin, folic acid), rosemary extract, ascorbic acid.

**May contain:** Egg

\*Not a product of genetic engineering

**INSTRUCTIONS:** Store in a sealed container in a cool, dry place.



NET WT 4.94 OZ. 140g

Pack: 6 per case

Unit Dim.: 7.5"H 5.25"W 2.25"D

Shelf Life: 240 days



### Traditional Stuffing Mix



Nutrition Facts	
about 5 servings per container	
Serving size 2/3 cup (37g)	
about 1 cup prepared	
Amount per serving	
<b>Calories</b>	<b>150</b>
% Daily Value*	
<b>Total Fat</b> 2.5g	3%
Saturated Fat 0g	0%
Trans Fat 0g	
<b>Cholesterol</b> 0mg	0%
<b>Sodium</b> 490mg	21%
<b>Total Carb.</b> 30g	11%
Dietary Fiber 2g	7%
Total Sugars 1g	
Includes <1g Added Sugars	2%
<b>Protein</b> 1g	
Vitamin D 0mcg	0%
Calcium 30mg	2%
Iron 1.5mg	8%
Potassium 60mcg	2%
Thiamin 0.23mg	20%
Riboflavin 0.12mg	10%
Niacin 2.2mcg	15%
Folate 26mcg DFE (16mcg folic acid)	8%

**INGREDIENTS:** Gluten-free flour blend (modified tapioca starch, potato starch\*, rice flour, rice starch), water, high oleic canola oil\*, cane sugar, salt, modified cellulose, yeast, herbs (thyme, sage, rosemary, parsley), psyllium, onion, garlic, milled flaxseed, vitamin and mineral blend (niacin, iron, thiamin, riboflavin, folic acid), spices, beta-carotene (color), rosemary extract, ascorbic acid.

**May contain:** Egg

\*Not a product of genetic engineering

**INSTRUCTIONS:** Store in a sealed container in a cool, dry place.



NET WT 6.5 OZ. 185g

Pack: 6 per case

Unit Dim.: 8"H 5"W 3"D

Shelf Life: 240 days



# Best things in life are free from™

Produced in a dedicated facility **free from** gluten, wheat, dairy, peanuts, tree nuts and soy.

Gluten-free has never tasted so good\*



# GROCERY AISLE

## BAKING PRODUCTS

### Panko Style Bread Crumbs



Nutrition Facts	
about 12 servings per container	
<b>Serving size</b>	<b>1/4 cup (30g)</b>
Amount per serving	
<b>Calories</b>	<b>120</b>
% Daily Value*	
<b>Total Fat</b> 1.5g	<b>2%</b>
Saturated Fat 0g	<b>0%</b>
Trans Fat 0g	
<b>Cholesterol</b> 0mg	<b>0%</b>
<b>Sodium</b> 160mg	<b>7%</b>
<b>Total Carbohydrate</b> 24g	<b>9%</b>
Dietary Fiber 1g	<b>4%</b>
Total Sugars 1g	
Includes 1g Added Sugars	<b>2%</b>
<b>Protein</b> 2g	
Vitamin D 0mcg	0%
Calcium 50mg	4%
Iron 0.6mg	4%
Potassium 20mg	0%

**INGREDIENTS:** Pea starch, water, tapioca starch, white rice flour, pea protein, canola oil\*, dextrose\*, leavening (sodium acid pyrophosphate, sodium bicarbonate, pea starch, mono calcium phosphate), pea fiber, salt, modified cellulose.

**May contain:** Egg  
 \*Not a product of genetic engineering  
**INSTRUCTIONS:** Store in a sealed container in a cool, dry place.



NET WT 12.5 OZ. 350g  
 Pack: 6 per case  
 Unit Dim.: 7.5"H 5.5"W 1.75"D  
 Shelf Life: 240 days

**Vegan**

### Graham Style Cracker Crumbs



Nutrition Facts	
about 10 servings per container	
<b>Serving size</b>	<b>1/4 cup (30g)</b>
Amount per serving	
<b>Calories</b>	<b>140</b>
% Daily Value*	
<b>Total Fat</b> 5g	<b>6%</b>
Saturated Fat 2.5g	<b>13%</b>
Trans Fat 0g	
<b>Cholesterol</b> 0mg	<b>0%</b>
<b>Sodium</b> 125mg	<b>5%</b>
<b>Total Carbohydrate</b> 23g	<b>8%</b>
Dietary Fiber 1g	<b>4%</b>
Total Sugars 7g	
Includes 7g Added Sugars	<b>14%</b>
<b>Protein</b> 1g	
Vitamin D 0mcg	0%
Calcium 26mg	2%
Iron 0.4mg	2%
Potassium 64mg	1%

**INGREDIENTS:** Pea starch, non-hydrogenated shortening (palm oil)†, brown rice flour, potato starch\*, brown sugar\*, sweet rice flour, tapioca starch, water, cane sugar, tapioca syrup, rice bran, molasses\*, salt, sodium bicarbonate, pea protein, natural flavor, pea fiber, inulin, sunflower lecithin, mono calcium phosphate, modified cellulose, guar gum.

**May contain:** Egg  
 \*Not a product of genetic engineering  
 †RSP0 Certified  
**INSTRUCTIONS:** Store in a sealed container in a cool, dry place.



NET WT 10.5 OZ. 300g  
 Pack: 6 per case  
 Unit Dim.: 7.5"H 5.5"W 1.75"D  
 Shelf Life: 365 days

**Vegan**

### Chocolate Cookie Crumbs



Nutrition Facts	
about 10 servings per container	
<b>Serving size</b>	<b>1/4 Cup (30g)</b>
Amount per serving	
<b>Calories</b>	<b>140</b>
% Daily Value*	
<b>Total Fat</b> 6g	<b>7%</b>
Saturated Fat 2.5g	<b>13%</b>
Trans Fat 0g	
<b>Cholesterol</b> 0mg	<b>0%</b>
<b>Sodium</b> 130mg	<b>6%</b>
<b>Total Carbohydrate</b> 22g	<b>8%</b>
Dietary Fiber 1g	<b>4%</b>
Total Sugars 6g	
Includes 6g Added Sugars	<b>12%</b>
<b>Protein</b> 1g	
Vitamin D 0mcg	0%
Calcium 11mg	0%
Iron 1mg	6%
Potassium 72mg	2%

**INGREDIENTS:** Cane sugar, pea starch, non-hydrogenated shortening (palm oil)†, potato starch\*, white rice flour, cocoa powder, water, tapioca starch, tapioca syrup, pea protein, salt, pea fiber, natural flavor, inulin, sodium bicarbonate, sunflower lecithin, modified cellulose.

**May contain:** Egg  
 \*Not a product of genetic engineering  
 †RSP0 Certified  
**INSTRUCTIONS:** Store in a sealed container in a cool, dry place.



NET WT 10.5 OZ. 300g  
 Pack: 6 per case  
 Unit Dim.: 7.5"H 5.5"W 1.75"D  
 Shelf Life: 365 days

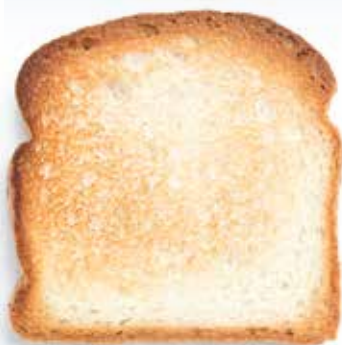
**Vegan**

We get accolades for these, even from those who can eat gluten. Free from the Top 8 allergens and vegan too.

Graham & Chocolate Crumbs are the perfect pantry addition for making cookies and desserts.

There's no crispier, browns-better gluten-free Panko on the market. A seasonal favorite at Christmas and Easter, year-round for Mac 'n Cheese and au gratin dishes.

# FREEZER BREADS



Free from the Top 8 allergens, super soft, scrumptious and safe for anyone, including the vegan market. Our most popular, White and Multigrain, are a must in any freezer set dedicated to repeat purchasers.

## White Wide Loaf



### Nutrition Facts

about 15 servings per container  
Serving size 1 slice (41g)

Amount per serving  
**Calories 100**

	% Daily Value*
<b>Total Fat</b> 2g	<b>3%</b>
Saturated Fat 0g	<b>0%</b>
Trans Fat 0g	
<b>Cholesterol</b> 0mg	<b>0%</b>
<b>Sodium</b> 190mg	<b>8%</b>
<b>Total Carbohydrate</b> 20g	<b>7%</b>
Dietary Fiber 1g	<b>4%</b>
Total Sugars 2g	
Includes 2g Added Sugars	<b>4%</b>
<b>Protein</b> 1g	
Vitamin D 0mcg	<b>0%</b>
Calcium 20mg	<b>0%</b>
Iron 0.5mg	<b>2%</b>
Potassium 30mg	<b>0%</b>
Thiamin 0.13mg	<b>11%</b>
Riboflavin 0.1mg	<b>8%</b>
Niacin 1.4mg	<b>9%</b>
Folate 12µg DFE (7mcg folic acid)	<b>3%</b>

\* The % Daily Value (DV) tells you how much a nutrient in a serving of food contributes to a daily diet. 2,000 calories a day is used for general nutrition advice.

**INGREDIENTS:** Water, gluten-free flour blend (modified tapioca starch, potato starch\*, rice flour, rice starch), cane sugar, canola oil\* and/or sunflower oil, modified cellulose, psyllium, chia seeds, salt, quinoa, yeast, carrot fiber, cultured corn syrup solids\*, citric acid, vitamin and mineral blend (niacin, iron, thiamin, riboflavin, folic acid).

May contain: Egg

\*Not a product of genetic engineering  
**INSTRUCTIONS:** KEEP FROZEN. For best results warm or toast before serving.



NET WT 21.7 OZ. 615g  
Pack: 6 per case  
Unit Dim.: 7.5"H 5"W 4.5"D  
Shelf Life: 240 days  
**KEEP FROZEN**



## Seeded Wide Loaf



### Nutrition Facts

about 15 servings per container  
Serving size 1 slice (41g)

Amount per serving  
**Calories 110**

	% Daily Value*
<b>Total Fat</b> 2.5g	<b>3%</b>
Saturated Fat 0g	<b>0%</b>
Trans Fat 0g	
<b>Cholesterol</b> 0mg	<b>0%</b>
<b>Sodium</b> 190mg	<b>8%</b>
<b>Total Carbohydrate</b> 20g	<b>7%</b>
Dietary Fiber 2g	<b>7%</b>
Total Sugars 2g	
Includes 2g Added Sugars	<b>4%</b>
<b>Protein</b> 1g	
Vitamin D 0mcg	<b>0%</b>
Calcium 30mg	<b>2%</b>
Iron 0.8mg	<b>4%</b>
Potassium 50mg	<b>0%</b>
Thiamin 0.13mg	<b>11%</b>
Riboflavin 0.11mg	<b>8%</b>
Niacin 1.5mg	<b>9%</b>
Folate 12µg DFE (7mcg folic acid)	<b>3%</b>

\* The % Daily Value (DV) tells you how much a nutrient in a serving of food contributes to a daily diet. 2,000 calories a day is used for general nutrition advice.

**INGREDIENTS:** Water, gluten-free flour blend (modified tapioca starch, potato starch\*, rice flour, rice starch, teff flour), cane sugar, canola oil\* and/or sunflower oil, hemp seeds, chia seeds, modified cellulose, milled flaxseed, psyllium, salt, quinoa, flax seeds, yeast, carrot fiber, molasses\*, cultured corn syrup solids\*, citric acid, vitamin and mineral blend (niacin, iron, thiamin, riboflavin, folic acid).

May contain: Egg

\*Not a product of genetic engineering  
**INSTRUCTIONS:** KEEP FROZEN. For best results warm or toast before serving.



NET WT 21.7 OZ. 615g  
Pack: 6 per case  
Unit Dim.: 7.5"H 5"W 4.5"D  
Shelf Life: 240 days  
**KEEP FROZEN**



## White



### Nutrition Facts

about 8 servings per container  
Serving size 2 slices (57g)

Amount per serving  
**Calories 140**

	% Daily Value*
<b>Total Fat</b> 2g	<b>3%</b>
Saturated Fat 0g	<b>0%</b>
Trans Fat 0g	
<b>Cholesterol</b> 0mg	<b>0%</b>
<b>Sodium</b> 270mg	<b>12%</b>
<b>Total Carbohydrate</b> 30g	<b>11%</b>
Dietary Fiber 1g	<b>4%</b>
Total Sugars 2g	
Includes 2g Added Sugars	<b>4%</b>
<b>Protein</b> 1g	
Vitamin D 0mcg	<b>0%</b>
Calcium 30mg	<b>2%</b>
Iron 0.7mg	<b>4%</b>
Potassium 30mg	<b>0%</b>
Thiamin 0.09mg	<b>8%</b>
Riboflavin 0.09mg	<b>6%</b>
Niacin 1.4mg	<b>8%</b>
Folate 25mcg (15 mcg folic acid)	<b>8%</b>

\* The % Daily Value (DV) tells you how much a nutrient in a serving of food contributes to a daily diet. 2,000 calories a day is used for general nutrition advice.

**INGREDIENTS:** Gluten-free flour blend (modified tapioca starch, potato starch\*, white rice flour, brown rice flour, rice starch), water, canola oil\* and/or sunflower oil, cane sugar, dextrose\*, modified cellulose, psyllium, salt, yeast, vinegar, milled flaxseed, cultured corn syrup solids\*, citric acid, vitamin and mineral blend (white rice flour, niacin, iron, thiamin, riboflavin, folic acid).

May contain: Egg

\*Not a product of genetic engineering  
**INSTRUCTIONS:** KEEP FROZEN. For best results warm or toast before serving.



NET WT 16 OZ. 454g  
Pack: 6 per case  
Unit Dim.: 8.25"H 4"W 4.5"D  
Shelf Life: 240 days  
**KEEP FROZEN**



## Multigrain



### Nutrition Facts

about 8 servings per container  
Serving size 2 slices (57g)

Amount per serving	
<b>Calories</b>	<b>150</b>
% Daily Value*	
<b>Total Fat</b> 3.5g	<b>4%</b>
Saturated Fat 0g	<b>0%</b>
Trans Fat 0g	
<b>Cholesterol</b> 0mg	<b>0%</b>
<b>Sodium</b> 270mg	<b>12%</b>
<b>Total Carbohydrate</b> 29g	<b>11%</b>
Dietary Fiber 2g	<b>7%</b>
Total Sugars 2g	
Includes 2g Added Sugars	<b>4%</b>
<b>Protein</b> 2g	
Vitamin D 0mcg	0%
Calcium 30mg	2%
Iron 1mg	6%
Potassium 60mg	0%
Thiamin 0.09mg	8%
Riboflavin 0.09mg	6%
Niacin 1.4mg	8%
Folate 30mcg (18 mcg folic acid)	8%

\*The % Daily Value (DV) tells you how much a nutrient in a serving of food contributes to a daily diet. 2,000 calories a day is used for general nutrition advice.

## Whole Grain



### Nutrition Facts

about 8 servings per container  
Serving size 2 slices (63g)

Amount per serving	
<b>Calories</b>	<b>160</b>
% Daily Value*	
<b>Total Fat</b> 2.5g	<b>3%</b>
Saturated Fat 0g	<b>0%</b>
Trans Fat 0g	
<b>Cholesterol</b> 0mg	<b>0%</b>
<b>Sodium</b> 270mg	<b>12%</b>
<b>Total Carbohydrate</b> 33g	<b>12%</b>
Dietary Fiber 2g	<b>7%</b>
Total Sugars 2g	
Includes 2g Added Sugars	<b>4%</b>
<b>Protein</b> 1g	
Vitamin D 0mcg	0%
Calcium 30mg	2%
Iron 0.8mg	4%
Potassium 60mg	0%
Thiamin 0.09mg	8%
Riboflavin 0.09mg	6%
Niacin 1.6mg	10%
Folate 35mcg (21 mcg folic acid)	8%

\*The % Daily Value (DV) tells you how much a nutrient in a serving of food contributes to a daily diet. 2,000 calories a day is used for general nutrition advice.

## Cinnamon Raisin



### Nutrition Facts

about 8 servings per container  
Serving size 2 slices (70g)

Amount per serving	
<b>Calories</b>	<b>170</b>
% Daily Value*	
<b>Total Fat</b> 2g	<b>3%</b>
Saturated Fat 0g	<b>0%</b>
Trans Fat 0g	
<b>Cholesterol</b> 0mg	<b>0%</b>
<b>Sodium</b> 280mg	<b>12%</b>
<b>Total Carbohydrate</b> 39g	<b>14%</b>
Dietary Fiber 3g	<b>11%</b>
Total Sugars 8g	
Includes 3g Added Sugars	<b>6%</b>
<b>Protein</b> 1g	
Vitamin D 0mcg	0%
Calcium 40mg	4%
Iron 1.1mg	6%
Potassium 150mg	4%
Thiamin 0.11mg	10%
Riboflavin 0.11mg	8%
Niacin 1.8mg	10%
Folate 40mcg (24 mcg folic acid)	10%

\*The % Daily Value (DV) tells you how much a nutrient in a serving of food contributes to a daily diet. 2,000 calories a day is used for general nutrition advice.

Best things  
in life are  
free from™

Produced in a dedicated  
facility **free from** gluten,  
wheat, dairy, peanuts,  
tree nuts and soy.

Gluten-free  
has never tasted  
so good\*

**INGREDIENTS:** Water, gluten-free flour blend (modified tapioca starch, potato starch\*, white rice flour, rice starch, brown rice flour, teff flour), canola oil\*, cane sugar, dextrose\*, sunflower seeds, quinoa, flax seeds, modified cellulose, psyllium, milled flaxseed, salt, yeast, vinegar, molasses\*, cultured corn syrup solids\*, citric acid, vitamin and mineral blend (white rice flour, niacin, iron, thiamin, riboflavin, folic acid).

May contain: Egg

\*Not a product of genetic engineering

**INSTRUCTIONS:** KEEP FROZEN. For best results warm or toast before serving.



6 20133 00045 8

NET WT 16 OZ. 454g

Pack: 6 per case

Unit Dim.: 8.25"H 4"W 4.5"D

Shelf Life: 240 days

**KEEP FROZEN**



**INGREDIENTS:** Gluten-free flour blend (modified tapioca starch, potato starch\*, white rice flour, rice starch, brown rice flour, teff flour), water, canola oil\* and/or sunflower oil, cane sugar, dextrose\*, modified cellulose, psyllium, salt, yeast, vinegar, molasses\*, milled flaxseed, cultured corn syrup solids\*, citric acid, vitamin and mineral blend (white rice flour, niacin, iron, thiamin, riboflavin, folic acid).

May contain: Egg

\*Not a product of genetic engineering

**INSTRUCTIONS:** KEEP FROZEN. For best results warm or toast before serving.



6 20133 00076 2

NET WT 17.8 OZ. 504g

Pack: 6 per case

Unit Dim.: 8.25"H 4"W 4.5"D

Shelf Life: 240 days

**KEEP FROZEN**



**INGREDIENTS:** Water, gluten-free flour blend (modified tapioca starch, potato starch\*, white rice flour, brown rice flour, rice starch), raisins, canola oil\* and/or sunflower oil, cane sugar, dextrose\*, modified cellulose, psyllium, salt, yeast, cinnamon, cultured corn syrup solids\*, citric acid, milled flaxseed, vitamin and mineral blend (niacin, iron, thiamin, riboflavin, folic acid).

May contain: Egg

\*Not a product of genetic engineering

**INSTRUCTIONS:** KEEP FROZEN. For best results warm or toast before serving.



6 20133 00080 9

NET WT 19.8 OZ. 560g

Pack: 6 per case

Unit Dim.: 8.25"H 4"W 4.5"D

Shelf Life: 240 days

**KEEP FROZEN**





# FREEZER BUNS & ROLLS



Ever-popular all year round, sales jump when everyone's filling up on road-trips, picnics, & eating outdoors. Make sure your shelves are stocked for hot summer sales.

## Hamburger Buns



### Nutrition Facts

about 4 servings per container  
Serving size 1 bun (61g)

Amount per serving	
<b>Calories</b>	<b>150</b>
% Daily Value*	
<b>Total Fat</b> 2.5g	<b>3%</b>
Saturated Fat 0g	<b>0%</b>
Trans Fat 0g	
<b>Cholesterol</b> 0mg	<b>0%</b>
<b>Sodium</b> 290mg	<b>13%</b>
<b>Total Carbohydrate</b> 32g	<b>12%</b>
Dietary Fiber 2g	<b>7%</b>
Total Sugars 3g	
Includes 3g Added Sugars	<b>6%</b>
<b>Protein</b> 1g	
Vitamin D 0mcg	0%
Calcium 30mg	2%
Iron 0.8mg	4%
Potassium 30mg	0%
Thiamin 0.09mg	8%
Riboflavin 0.09mg	6%
Niacin 1.5mg	10%
Folate 35mcg (21 mcg folic acid)	8%

**INGREDIENTS:** Gluten-free flour blend (modified tapioca starch, potato starch\*, white rice flour, brown rice flour, rice starch), water, dextrose\*, canola oil\* and/or sunflower oil, cane sugar, modified cellulose, psyllium, salt, yeast, vinegar, milled flaxseed, cultured corn syrup solids\*, citric acid, vitamin and mineral blend (white rice flour, niacin, iron, thiamin, riboflavin, folic acid).

May contain: Egg

\*Not a product of genetic engineering

**INSTRUCTIONS:** KEEP FROZEN. For best results warm or toast before serving.



NET WT 8.6 OZ. 245g

Pack: 6 per case

Unit Dim.: 7"H 4"W 4"D

Shelf Life: 240 days

**KEEP FROZEN**



## Hotdog Buns



### Nutrition Facts

about 4 servings per container  
Serving size 1 bun (71g)

Amount per serving	
<b>Calories</b>	<b>180</b>
% Daily Value*	
<b>Total Fat</b> 2.5g	<b>3%</b>
Saturated Fat 0g	<b>0%</b>
Trans Fat 0g	
<b>Cholesterol</b> 0mg	<b>0%</b>
<b>Sodium</b> 330mg	<b>14%</b>
<b>Total Carbohydrate</b> 38g	<b>14%</b>
Dietary Fiber 2g	<b>7%</b>
Total Sugars 3g	
Includes 3g Added Sugars	<b>6%</b>
<b>Protein</b> 1g	
Vitamin D 0mcg	0%
Calcium 30mg	2%
Iron 0.9mg	6%
Potassium 40mg	0%
Thiamin 0.11mg	10%
Riboflavin 0.11mg	8%
Niacin 1.8mg	10%
Folate 40mcg (24 mcg folic acid)	10%

**INGREDIENTS:** Gluten-free flour blend (modified tapioca starch, potato starch\*, white rice flour, brown rice flour, rice starch), water, dextrose\*, canola oil\* and/or sunflower oil, cane sugar, modified cellulose, psyllium, salt, yeast, vinegar, milled flaxseed, cultured corn syrup solids\*, citric acid, vitamin and mineral blend (white rice flour, niacin, iron, thiamin, riboflavin, folic acid).

May contain: Egg

\*Not a product of genetic engineering

**INSTRUCTIONS:** KEEP FROZEN. For best results warm or toast before serving.



NET WT 10 OZ. 285g

Pack: 6 per case

Unit Dim.: 6"H 4"W 4"D

Shelf Life: 240 days

**KEEP FROZEN**



## Artisan Dinner Rolls



### Nutrition Facts

about 6 servings per container  
Serving size 1 roll (49g)

Amount per serving	
<b>Calories</b>	<b>130</b>
% Daily Value*	
<b>Total Fat</b> 2.5g	<b>3%</b>
Saturated Fat 0g	<b>0%</b>
Trans Fat 0g	
<b>Cholesterol</b> 0mg	<b>0%</b>
<b>Sodium</b> 240mg	<b>10%</b>
<b>Total Carbohydrate</b> 26g	<b>9%</b>
Dietary Fiber 2g	<b>7%</b>
Total Sugars 3g	
Includes 2g Added Sugars	<b>4%</b>
<b>Protein</b> 1g	
Vitamin D 0mcg	0%
Calcium 20mg	2%
Iron 1.9mg	1%
Potassium 20mg	0%
Thiamin 0.13mg	11%
Riboflavin 0.08mg	6%
Niacin 1mg	6%
Folate 14mcg DFE (8mcg folic acid)	4%

**INGREDIENTS:** Gluten-free flour blend (modified tapioca starch, potato starch\*, white rice flour, brown rice flour, rice starch), water, canola oil\*, cane sugar, modified cellulose, psyllium, salt, yeast, milled flaxseed, cultured corn syrup solids\*, citric acid, vitamin and mineral blend (niacin, iron, thiamin, riboflavin, folic acid), natural flavor.

May contain: Egg

\*Not a product of genetic engineering

**INSTRUCTIONS:** KEEP FROZEN. For best results thaw buns for 20 minutes on the counter.

**Oven/Toaster Oven:** Preheat to 350°F. Bake for 5-7 minutes. Serve within 2-3 minutes.

**Microwave:** Microwave on high for 10-15 seconds and serve immediately.

**Caution:** Buns may be hot when they first come out of the oven or microwave.



NET WT 10.3 OZ. 294g

Pack: 6 per case

Unit Dim.: 7.5"H 5"W 4.125"D

Shelf Life: 240 days

**KEEP FROZEN**



## Traditional English Muffins



### Nutrition Facts

about 6 servings per container

**Serving size 1 muffin (59g)**

Amount per serving

**Calories 150**

% Daily Value\*

**Total Fat** 2.5g **3%**

Saturated Fat 1g **5%**

Trans Fat 0g

**Cholesterol** 0mg **0%**

**Sodium** 330mg **14%**

**Total Carbohydrate** 29g **11%**

Dietary Fiber 2g **7%**

Total Sugars 2g

Includes 2g Added Sugars **4%**

**Protein** 2g

Vitamin D 0mcg **0%**

Calcium 30mg **2%**

Iron 0.6mg **4%**

Potassium 110mg **2%**

Thiamin 0.23mg **20%**

Riboflavin 0.12mg **10%**

Niacin 2mg **15%**

Folate 30mcg **8%**

\* The % Daily Value (DV) tells you how much a nutrient in a serving of food contributes to a daily diet. 2,000 calories a day is used for general nutrition advice.

**INGREDIENTS:** Water, gluten-free flour blend (rice flour, potato starch\*, modified tapioca starch, rice starch, chickpea flour, modified corn starch), cane sugar, palm oil†, canola oil\*, psyllium, yeast, sodium acid pyrophosphate, pea fiber, sodium bicarbonate, pea protein, cream of tartar, cultured corn syrup solids\*, citric acid\*, modified cellulose, salt, vitamin and mineral blend (niacin, iron, thiamin, riboflavin, folic acid), natural flavor.

**May contain:** Egg

\*Not a product of genetic engineering

†RSPO Certified

**INSTRUCTIONS:** KEEP FROZEN. For best results warm or toast before serving.



6 20133 00054 0

**NET WT 12.5 OZ. 354g**

Pack: 6 per case

Unit Dim.: 7.5"H 4.75"W 3.625"D

Shelf Life: 240 days

**KEEP FROZEN**



## English Muffins



### Nutrition Facts

about 4 servings per container

**Serving size 1 muffin (94g)**

Amount per serving

**Calories 240**

% Daily Value\*

**Total Fat** 4g **5%**

Saturated Fat 0g **0%**

Trans Fat 0g

**Cholesterol** 0mg **0%**

**Sodium** 360mg **16%**

**Total Carbohydrate** 47g **17%**

Dietary Fiber 1g **4%**

Total Sugars 6g

Includes 6g Added Sugars **12%**

**Protein** 4g

Vitamin D 0mcg **0%**

Calcium 12mg **0%**

Iron 1mg **6%**

Potassium 59mg **2%**

Thiamin 0.3mg **30%**

Riboflavin 0.3mg **25%**

Niacin 3mg **20%**

Folate 31mcg **8%**

\* The % Daily Value (DV) tells you how much a nutrient in a serving of food contributes to a daily diet. 2,000 calories a day is used for general nutrition advice.

**INGREDIENTS:** Water, white rice flour, egg whites, tapioca starch, potato starch\*, cane sugar, yeast, canola oil\*, polydextrose, dextrose, modified cellulose, salt, pea protein, vitamin and mineral blend (niacin, iron, thiamin, riboflavin, folic acid).

\*Not a product of genetic engineering

**INSTRUCTIONS:** KEEP FROZEN. For best results warm or toast before serving.



6 20133 00050 2

**NET WT 13.5 OZ. 375g**

Pack: 6 per case

Unit Dim.: 8"H 4"W 4"D

Shelf Life: 240 days

**KEEP FROZEN**

Safe and Scrumptious  
since 1991



Best things  
in life are



# FREEZER BAGELS



The only gluten-free bagel baked true to the New York style, boiled first, just like the real 'thing'. Chewy crusts outside, super soft inside - yet totally spreadable. Free from top 8 allergens, yet so full of flavor.

## Plain



Nutrition Facts	
4 servings per container	
<b>Serving size</b>	<b>1 bagel (86g)</b>
<b>Amount per serving</b>	
<b>Calories</b>	<b>240</b>
% Daily Value*	
<b>Total Fat</b> 7g	<b>9%</b>
Saturated Fat 1g	<b>5%</b>
Trans Fat 0g	
<b>Cholesterol</b> 0mg	<b>0%</b>
<b>Sodium</b> 240mg	<b>10%</b>
<b>Total Carbohydrate</b> 42g	<b>15%</b>
Dietary Fiber 7g	<b>25%</b>
Total Sugars 2g	
Includes 2g Added Sugars	<b>4%</b>
<b>Protein</b> 1g	
Vitamin D 0mcg	0%
Calcium 52mg	4%
Iron 1mg	4%
Potassium 46mg	1%
Thiamin 0.1mg	10%
Riboflavin 0.1mg	8%
Niacin 1.5mg	10%
Folate 23mcg	6%

**INGREDIENTS:** Water, white rice flour, potato starch\*, tapioca starch, canola oil\*, cellulose, corn starch\*, fructose\*, psyllium, non-hydrogenated shortening (palm oil)†, modified cellulose, yeast, salt, cultured corn syrup solids\*, citric acid, vitamin and mineral blend (niacin, iron, thiamin, riboflavin, folic acid), enzymes.

**May contain:** Egg

\*Not a product of genetic engineering  
†RSPD Certified

**INSTRUCTIONS:** KEEP FROZEN. For best results warm or toast before serving.



NET WT 12.1 OZ. 344g  
Pack: 6 per case  
Unit Dim.: 7"H 4"W 4"D  
Shelf Life: 240 days

**KEEP FROZEN**

**Vegan**

## Cinnamon Raisin



Nutrition Facts	
4 servings per container	
<b>Serving size</b>	<b>1 bagel (88g)</b>
<b>Amount per serving</b>	
<b>Calories</b>	<b>250</b>
% Daily Value*	
<b>Total Fat</b> 6g	<b>8%</b>
Saturated Fat 1g	<b>5%</b>
Trans Fat 0g	
<b>Cholesterol</b> 0mg	<b>0%</b>
<b>Sodium</b> 210mg	<b>9%</b>
<b>Total Carbohydrate</b> 47g	<b>17%</b>
Dietary Fiber 7g	<b>25%</b>
Total Sugars 8g	
Includes 2g Added Sugars	<b>4%</b>
<b>Protein</b> 2g	
Vitamin D 0mcg	0%
Calcium 57mg	4%
Iron 1mg	6%
Potassium 141mg	2%
Thiamin 0.1mg	10%
Riboflavin 0.1mg	8%
Niacin 1.5mg	10%
Folate 16mcg	4%

**INGREDIENTS:** Water, white rice flour, potato starch\*, raisins, tapioca starch, canola oil\*, cellulose, corn starch\*, fructose\*, psyllium, non-hydrogenated shortening (palm oil)†, yeast, modified cellulose, cinnamon, salt, cultured corn syrup solids\*, citric acid, vitamin and mineral blend (niacin, iron, thiamin, riboflavin, folic acid), enzymes.

**May contain:** Egg

\*Not a product of genetic engineering  
†RSPD Certified

**INSTRUCTIONS:** KEEP FROZEN. For best results warm or toast before serving.



NET WT 12.4 OZ. 352g  
Pack: 6 per case  
Unit Dim.: 7"H 4"W 4"D  
Shelf Life: 240 days

**KEEP FROZEN**

**Vegan**

## Blueberry



Nutrition Facts	
4 servings per container	
<b>Serving size</b>	<b>1 bagel (86g)</b>
<b>Amount per serving</b>	
<b>Calories</b>	<b>240</b>
% Daily Value*	
<b>Total Fat</b> 7g	<b>9%</b>
Saturated Fat 1.5g	<b>8%</b>
Trans Fat 0g	
<b>Cholesterol</b> 0mg	<b>0%</b>
<b>Sodium</b> 250mg	<b>11%</b>
<b>Total Carbohydrate</b> 47g	<b>17%</b>
Dietary Fiber 7g	<b>25%</b>
Total Sugars 3g	
Includes 2g Added Sugars	<b>4%</b>
<b>Protein</b> 2g	
Vitamin D 0mcg	0%
Calcium 51mg	4%
Iron 1mg	6%
Potassium 62mg	2%
Thiamin 0.1mg	10%
Riboflavin 0.125mg	8%
Niacin 1.75mg	10%
Folate 18mcg	4%

**INGREDIENTS:** Water, white rice flour, potato starch\*, tapioca starch, blueberries, canola oil\*, cellulose, corn starch\*, fructose\*, psyllium, non-hydrogenated shortening (palm oil)†, natural flavor, yeast, modified cellulose, salt, cultured corn syrup solids\*, citric acid, vitamin and mineral blend (niacin, iron, thiamin, riboflavin, folic acid), enzymes.

**May contain:** Egg

\*Not a product of genetic engineering  
†RSPD Certified

**INSTRUCTIONS:** KEEP FROZEN. For best results warm or toast before serving.



NET WT 12.1 OZ. 344g  
Pack: 6 per case  
Unit Dim.: 7"H 4"W 4"D  
Shelf Life: 240 days

**KEEP FROZEN**

**Vegan**



# FREEZER DONUTS

## powdered Sugar



Nutrition Facts	
about 6 servings per container	
<b>Serving size</b>	<b>1 donut (53g)</b>
<b>Amount per serving</b>	
<b>Calories</b>	<b>220</b>
<b>% Daily Value*</b>	
<b>Total Fat</b> 7g	<b>9%</b>
Saturated Fat 3.5g	<b>18%</b>
Trans Fat 0g	
<b>Cholesterol</b> 10mg	<b>3%</b>
<b>Sodium</b> 170mg	<b>7%</b>
<b>Total Carbohydrate</b>	
Dietary Fiber 1g	<b>4%</b>
Total Sugars 21g	
Includes 20g Added Sugars	<b>38%</b>
<b>Protein</b> 2g	
Vitamin D 0mcg	<b>0%</b>
Calcium 11mg	<b>1%</b>
Iron 0.2mg	<b>2%</b>
Potassium 33mg	<b>1%</b>

**INGREDIENTS:** Cane sugar, sucrose\*, corn syrup\*, white rice flour, tapioca starch, non-hydrogenated shortening (palm oil)†, sweet rice flour, whole eggs, water, oligofructose, yeast, pea protein, egg whites, xanthan gum\*, salt, rice bran extract, rice syrup, fruit juice, cellulose, leavening (sodium acid pyrophosphate, sodium bicarbonate, pea starch, mono calcium phosphate), glucono delta lactone, sodium bicarbonate, nutmeg, natural flavor.

\*Not a product of genetic engineering  
†RSPO Certified

**INSTRUCTIONS:** Keep frozen for best quality, thaw to serve. Warm or microwave to enhance taste & texture for 10-15 seconds on high.

**CAUTION:** Icing may be hot after warming.



NET WT 11.3 OZ. 320g  
Pack: 8 per case  
Unit Dim.: 7.5"H 5"W 2.75"D  
Shelf Life: 240 days  
**KEEP FROZEN**

## cookies & Cream



Nutrition Facts	
about 6 servings per container	
<b>Serving size</b>	<b>1 donut (53g)</b>
<b>Amount per serving</b>	
<b>Calories</b>	<b>210</b>
<b>% Daily Value*</b>	
<b>Total Fat</b> 7g	<b>8%</b>
Saturated Fat 2.5g	<b>13%</b>
Trans Fat 0g	
<b>Cholesterol</b> 10mg	<b>3%</b>
<b>Sodium</b> 190mg	<b>8%</b>
<b>Total Carbohydrate</b> 36g	<b>13%</b>
Dietary Fiber 1g	<b>4%</b>
Total Sugars 21g	
Includes 20g Added Sugars	<b>38%</b>
<b>Protein</b> 2g	
Vitamin D 0mcg	<b>0%</b>
Calcium 13mg	<b>1%</b>
Iron 0.2mg	<b>2%</b>
Potassium 39mg	<b>1%</b>

**INGREDIENTS:** Cane sugar, sucrose\*, corn syrup\*, white rice flour, tapioca starch, non-hydrogenated shortening (palm oil)†, sweet rice flour, whole eggs, water, oligofructose, yeast, pea protein, egg whites, xanthan gum\*, salt, rice bran extract, rice syrup, fruit juice, cellulose, leavening (sodium acid pyrophosphate, sodium bicarbonate, pea starch, mono calcium phosphate), glucono delta lactone, sodium bicarbonate, natural flavor, caramel [color].

\*Not a product of genetic engineering  
†RSPO Certified

**INSTRUCTIONS:** Keep frozen for best quality, thaw to serve. Warm or microwave to enhance taste & texture for 10-15 seconds on high.

**CAUTION:** Icing may be hot after warming.



NET WT 11.3 OZ. 320g  
Pack: 8 per case  
Unit Dim.: 7.5"H 5"W 2.75"D  
Shelf Life: 240 days  
**KEEP FROZEN**

## chocolate Dipped



Nutrition Facts	
about 6 servings per container	
<b>Serving size</b>	<b>1 donut (53g)</b>
<b>Amount per serving</b>	
<b>Calories</b>	<b>210</b>
<b>% Daily Value*</b>	
<b>Total Fat</b> 6g	<b>8%</b>
Saturated Fat 2.5g	<b>13%</b>
Trans Fat 0g	
<b>Cholesterol</b> 10mg	<b>3%</b>
<b>Sodium</b> 190mg	<b>8%</b>
<b>Total Carbohydrate</b> 36g	<b>13%</b>
Dietary Fiber 1g	<b>4%</b>
Total Sugars 21g	
Includes 20g Added Sugars	<b>40%</b>
<b>Protein</b> 2g	
Vitamin D 0mcg	<b>0%</b>
Calcium 13mg	<b>1%</b>
Iron 0.4mg	<b>2%</b>
Potassium 50mg	<b>1%</b>

**INGREDIENTS:** Cane sugar, sucrose\*, corn syrup\*, white rice flour, tapioca starch, non-hydrogenated shortening (palm oil)†, sweet rice flour, whole eggs, water, oligofructose, yeast, pea protein, egg whites, xanthan gum\*, salt, rice bran extract, rice syrup, fruit juice, cellulose, leavening (sodium acid pyrophosphate, sodium bicarbonate, pea starch, mono calcium phosphate), cocoa powder, glucono delta lactone, sodium bicarbonate, nutmeg.

\*Not a product of genetic engineering  
†RSPO Certified

**INSTRUCTIONS:** Keep frozen for best quality, thaw to serve. Warm or microwave to enhance taste & texture for 10-15 seconds on high.

**CAUTION:** Icing may be hot after warming.



NET WT 11.3 OZ. 320g  
Pack: 8 per case  
Unit Dim.: 7.5"H 5"W 2.75"D  
Shelf Life: 240 days  
**KEEP FROZEN**

Coming soon!

North America's #1  
top selling  
gluten-free donut.  
A must-have along-  
side muffins and  
waffles to complete  
the breakfast  
section—All perfect  
grab 'n go items too.  
Guaranteed to bring  
you customers as  
loyal to your store as  
they are to our brand.

## Cinnamon Sugar



### Nutrition Facts

about 6 servings per container  
Serving size 1 donut (45g)

Amount per serving	
<b>Calories</b>	<b>190</b>
% Daily Value*	
<b>Total Fat</b> 7g	<b>9%</b>
Saturated Fat 3g	<b>15%</b>
Trans Fat 0g	
<b>Cholesterol</b> 10mg	<b>3%</b>
<b>Sodium</b> 200mg	<b>9%</b>
<b>Total Carbohydrate</b> 29g	<b>11%</b>
Dietary Fiber 1g	<b>4%</b>
Total Sugars 13g	
Includes 13g Added Sugars	<b>26%</b>
<b>Protein</b> 2g	
Vitamin D 0mcg	0%
Calcium 13mg	1%
Iron 0.3mg	2%
Potassium 38mg	1%

\* The % Daily Value (DV) tells you how much a nutrient in a serving of food contributes to a daily diet. 2,000 calories a day is used for general nutrition advice.

**INGREDIENTS:** Cane sugar, white rice flour, tapioca starch, non-hydrogenated shortening (palm oil)†, sweet rice flour, whole eggs, water, oligofructose, yeast, pea protein, egg whites, xanthan gum\*, salt, rice bran extract, rice syrup, fruit juice, cellulose, leavening (sodium acid pyrophosphate, sodium bicarbonate, pea starch, mono calcium phosphate), glucono delta lactone, cinnamon, sodium bicarbonate, nutmeg.

\*Not a product of genetic engineering  
†RSPO Certified

**INSTRUCTIONS:** Keep frozen for best quality, thaw to serve. Warm or microwave to enhance taste & texture for 10-15 seconds on high.

**CAUTION:** Icing may be hot after warming.



6 20133 00223 0

NET WT 9.5 OZ. 270g

Pack: 8 per case

Unit Dim.: 7.5"H 5"W 2.75"D

Shelf Life: 240 days

**KEEP FROZEN**

## Vanilla Glazed



### Nutrition Facts

about 6 servings per container  
Serving size 1 donut (53g)

Amount per serving	
<b>Calories</b>	<b>220</b>
% Daily Value*	
<b>Total Fat</b> 7g	<b>9%</b>
Saturated Fat 3.5g	<b>18%</b>
Trans Fat 0g	
<b>Cholesterol</b> 10mg	<b>3%</b>
<b>Sodium</b> 170mg	<b>7%</b>
<b>Total Carbohydrate</b> 38g	<b>14%</b>
Dietary Fiber 1g	<b>4%</b>
Total Sugars 21g	
Includes 20g Added Sugars	<b>40%</b>
<b>Protein</b> 2g	
Vitamin D 0mcg	0%
Calcium 11mg	1%
Iron 0.2mg	2%
Potassium 33mg	1%

\* The % Daily Value (DV) tells you how much a nutrient in a serving of food contributes to a daily diet. 2,000 calories a day is used for general nutrition advice.

**INGREDIENTS:** Cane sugar, sucrose\*, corn syrup\*, white rice flour, tapioca starch, non-hydrogenated shortening (palm oil)†, sweet rice flour, whole eggs, water, oligofructose, yeast, pea protein, egg whites, xanthan gum\*, salt, rice bran extract, rice syrup, fruit juice, cellulose, leavening (sodium acid pyrophosphate, sodium bicarbonate, pea starch, mono calcium phosphate), glucono delta lactone, sodium bicarbonate, nutmeg, natural flavor.

\*Not a product of genetic engineering  
†RSPO Certified

**INSTRUCTIONS:** Keep frozen for best quality, thaw to serve. Warm or microwave to enhance taste & texture for 10-15 seconds on high.

**CAUTION:** Icing may be hot after warming.



6 20133 00220 9

NET WT 11.3 OZ. 320g

Pack: 8 per case

Unit Dim.: 7.5"H 5"W 2.75"D

Shelf Life: 240 days

**KEEP FROZEN**

## Maple Glazed



### Nutrition Facts

about 6 servings per container  
Serving size 1 donut (53g)

Amount per serving	
<b>Calories</b>	<b>210</b>
% Daily Value*	
<b>Total Fat</b> 6.5g	<b>8%</b>
Saturated Fat 3g	<b>15%</b>
Trans Fat 0g	
<b>Cholesterol</b> 15mg	<b>5%</b>
<b>Sodium</b> 210mg	<b>9%</b>
<b>Total Carbohydrate</b> 37g	<b>13%</b>
Dietary Fiber 1g	<b>4%</b>
Total Sugars 19g	
Includes 19g Added Sugars	<b>38%</b>
<b>Protein</b> 2g	
Vitamin D 0mcg	0%
Calcium 13mg	1%
Iron 0.2mg	2%
Potassium 39mg	1%

\* The % Daily Value (DV) tells you how much a nutrient in a serving of food contributes to a daily diet. 2,000 calories a day is used for general nutrition advice.

**INGREDIENTS:** Cane sugar, sucrose\*, corn syrup\*, white rice flour, tapioca starch, non-hydrogenated shortening (palm oil)†, sweet rice flour, whole eggs, water, oligofructose, yeast, pea protein, egg whites, xanthan gum\*, salt, rice bran extract, rice syrup, fruit juice, cellulose, leavening (sodium acid pyrophosphate, sodium bicarbonate, pea starch, mono calcium phosphate), glucono delta lactone, sodium bicarbonate, natural flavor, caramel (color).

\*Not a product of genetic engineering  
†RSPO Certified

**INSTRUCTIONS:** Keep frozen for best quality, thaw to serve. Warm or microwave to enhance taste & texture for 10-15 seconds on high.

**CAUTION:** Icing may be hot after warming.



6 20133 00221 6

NET WT 11.3 OZ. 320g

Pack: 8 per case

Unit Dim.: 7.5"H 5"W 2.75"D

Shelf Life: 240 days

**KEEP FROZEN**

# Best things in life are free from™

Produced in a dedicated facility **free from** gluten, wheat, dairy, peanuts, tree nuts and soy.

Gluten-free  
has never tasted  
so good\*

# FREEZER CRUSTS

## Pizza



### Nutrition Facts

4 servings per container  
Serving size 1/2 pizza crust (75g)

Amount per serving	Calories 230
	% Daily Value*
<b>Total Fat</b> 7g	<b>9%</b>
Saturated Fat 3.5g	<b>18%</b>
Trans Fat 0g	
<b>Cholesterol</b> 0mg	<b>0%</b>
<b>Sodium</b> 440mg	<b>19%</b>
<b>Total Carbohydrate</b> 39g	<b>14%</b>
Dietary Fiber 2g	<b>7%</b>
Total Sugars 3g	
Includes 3g Added Sugars	<b>6%</b>
<b>Protein</b> 3g	
Vitamin D 0mcg	0%
Calcium 20mg	2%
Iron 0.7mg	4%
Potassium 90mg	2%

\* The % Daily Value (DV) tells you how much a nutrient in a serving of food contributes to a daily diet. 2,000 calories a day is used for general nutrition advice.

### INGREDIENTS:

Water, white rice flour, potato starch\*, non-hydrogenated shortening (palm oil)†, sweet rice flour, yeast, cane sugar, pea starch, chickpea flour, pea fiber, modified cellulose, salt, psyllium, sodium bicarbonate, glucono delta lactone, sodium acid pyrophosphate, cultured corn syrup solids\*, citric acid.

May contain: Egg

\*Not a product of genetic engineering

†RSPO Certified

## Flatbread



### Nutrition Facts

4 servings per container  
Serving size 1/2 flatbread (72g)

Amount per serving	Calories 220
	% Daily Value*
<b>Total Fat</b> 7g	<b>9%</b>
Saturated Fat 3g	<b>15%</b>
Trans Fat 0g	
<b>Cholesterol</b> 0mg	<b>0%</b>
<b>Sodium</b> 420mg	<b>18%</b>
<b>Total Carbohydrate</b> 37g	<b>13%</b>
Dietary Fiber 2g	<b>7%</b>
Total Sugars 3g	
Includes 3g Added Sugars	<b>6%</b>
<b>Protein</b> 3g	
Vitamin D 0mcg	0%
Calcium 20mg	2%
Iron 0.7mg	4%
Potassium 90mg	2%

\* The % Daily Value (DV) tells you how much a nutrient in a serving of food contributes to a daily diet. 2,000 calories a day is used for general nutrition advice.

### INGREDIENTS:

Water, white rice flour, potato starch\*, non-hydrogenated shortening (palm oil)†, sweet rice flour, yeast, cane sugar, pea starch, chickpea flour, pea fiber, modified cellulose, salt, psyllium, sodium bicarbonate, glucono delta lactone, sodium acid pyrophosphate, cultured corn syrup solids\*, citric acid.

May contain: Egg

\*Not a product of genetic engineering

†RSPO Certified

## Pie



### Nutrition Facts

about 16 servings per container  
Serving size 1/8 crust (24g)

Amount per serving	Calories 100
	% Daily Value*
<b>Total Fat</b> 6g	<b>8%</b>
Saturated Fat 2.5g	<b>13%</b>
Trans Fat 0g	
<b>Cholesterol</b> 0mg	<b>0%</b>
<b>Sodium</b> 115mg	<b>5%</b>
<b>Total Carbohydrate</b> 12g	<b>4%</b>
Dietary Fiber 0g	<b>0%</b>
Total Sugars 1g	
Includes 1g Added Sugars	<b>2%</b>
<b>Protein</b> 1g	
Vitamin D 0mcg	0%
Calcium 0mg	0%
Iron 0mg	0%
Potassium 20mg	0%

\* The % Daily Value (DV) tells you how much a nutrient in a serving of food contributes to a daily diet. 2,000 calories a day is used for general nutrition advice.

### INGREDIENTS:

White rice flour, non-hydrogenated shortening (palm oil)†, water, potato starch\*, tapioca starch, cane sugar, chickpea flour, salt, xanthan gum\*, modified cellulose

May contain: Egg

\*Not a product of genetic engineering

†RSPO Certified



We blush with all the compliments we get for our tender, super-flaky Pie Crusts everyone loves. So easy to use. People who don't know they're gluten-free can't tell the difference.

Same goes for our pizzas & flatbreads. Everyone loves the taste, texture and how well they hold all those favorite toppings.



NET WT 10.6 OZ. 300g  
Pack: 6 per case  
Unit Dim.: 7.5"H 7"W 2.25"D  
Shelf Life: 240 days

KEEP FROZEN

Vegan



NET WT 10.2 OZ. 288g  
Pack: 6 per case  
Unit Dim.: 3"H 5"W 10"D  
Shelf Life: 365 days

KEEP FROZEN

Vegan



NET WT 13.75 OZ. 390g  
Pack: 6 per case  
Unit Dim.: 9.5"H 9.5"W 1.75"D  
Shelf Life: 240 days

KEEP FROZEN

Vegan



# FREEZER MUFFINS



Individually wrapped, these muffins are the perfect size for grab 'n go breakfast, snacks or lunch boxes. From catering to camping, allergy-aware customers love these ever-popular flavors.

## Chocolate Chip



### Nutrition Facts

about 4 servings per container  
**Serving size 1 muffin (62g)**

Amount per serving  
**Calories 240**

	% Daily Value*
<b>Total Fat</b> 11g	<b>14%</b>
Saturated Fat 3g	<b>15%</b>
Trans Fat 0g	
<b>Cholesterol</b> 55mg	<b>18%</b>
<b>Sodium</b> 180mg	<b>8%</b>
<b>Total Carbohydrate</b> 31g	<b>11%</b>
Dietary Fiber 2g	<b>7%</b>
Total Sugars 12g	
Includes 12g Added Sugars	<b>24%</b>

<b>Protein</b> 3g	
Vitamin D 0mcg	0%
Calcium 38mg	2%
Iron 1.4mg	8%
Potassium 62mg	2%
Thiamin 0.06mg	4%
Riboflavin 0.19mg	15%
Niacin 1.25mg	8%
Folate 10mcg	2%

\* The % Daily Value (DV) tells you how much a nutrient in a serving of food contributes to a daily diet. 2,000 calories a day is used for general nutrition advice.

**INGREDIENTS:** Whole eggs, cane sugar, white rice flour, chocolate chips (sugar, cocoa mass, cocoa butter, sunflower lecithin, natural flavor), water, canola oil\*, pea starch, apple purée, non-hydrogenated shortening (palm oil)†, tapioca syrup, leavening (sodium acid pyrophosphate, sodium bicarbonate, pea starch, mono calcium phosphate), corn starch\*, flax meal, cellulose, modified cellulose, vitamin and mineral blend (niacin, iron, thiamin, riboflavin, folic acid), sunflower lecithin, enzymes, natural flavor.

\*Not a product of genetic engineering  
†RSPO Certified

**INSTRUCTIONS:** Keep frozen. Thaw at room temperature or remove from packaging and warm in a microwave for 15-20 seconds. Enjoy!



6 20133 00255 1

NET WT 8.75 OZ. 248g

Pack: 6 per case

Unit Dim.: 6.75"H 6.75"W 2.375"D

Shelf Life: 365 days

**KEEP FROZEN**

## Lemon Blueberry



### Nutrition Facts

about 4 servings per container  
**Serving size 1 muffin (62g)**

Amount per serving  
**Calories 190**

	% Daily Value*
<b>Total Fat</b> 6g	<b>8%</b>
Saturated Fat 1g	<b>5%</b>
Trans Fat 0g	
<b>Cholesterol</b> 50mg	<b>17%</b>
<b>Sodium</b> 180mg	<b>8%</b>
<b>Total Carbohydrate</b> 31g	<b>11%</b>
Dietary Fiber 1g	<b>4%</b>
Total Sugars 14g	
Includes 14g Added Sugars	<b>28%</b>

<b>Protein</b> 2g	
Vitamin D 0mcg	0%
Calcium 29mg	2%
Iron 0.6mg	4%
Potassium 38mg	0%
Thiamin 0.06mg	4%
Riboflavin 0.19mg	15%
Niacin 1.2mg	8%
Folate 10mcg	2%

\* The % Daily Value (DV) tells you how much a nutrient in a serving of food contributes to a daily diet. 2,000 calories a day is used for general nutrition advice.

**INGREDIENTS:** Whole eggs, cane sugar, blueberries, white rice flour, pea starch, water, canola oil\*, glycerin, tapioca syrup, leavening (sodium acid pyrophosphate, sodium bicarbonate, pea starch, mono calcium phosphate), corn starch\*, cellulose, modified cellulose, flax meal, natural flavor, vitamin and mineral blend (niacin, iron, thiamin, riboflavin, folic acid), sunflower lecithin, enzymes.

\*Not a product of genetic engineering

**INSTRUCTIONS:** Keep frozen. Thaw at room temperature or remove from packaging and warm in a microwave for 15-20 seconds. Enjoy!



6 20133 00248 3

NET WT 8.75 OZ. 248g

Pack: 6 per case

Unit Dim.: 6.75"H 6.75"W 2.375"D

Shelf Life: 365 days

**KEEP FROZEN**

## Quinoa Spice



### Nutrition Facts

about 4 servings per container  
**Serving size 1 muffin (60g)**

Amount per serving  
**Calories 190**

	% Daily Value*
<b>Total Fat</b> 7g	<b>9%</b>
Saturated Fat 1g	<b>5%</b>
Trans Fat 0g	
<b>Cholesterol</b> 45mg	<b>15%</b>
<b>Sodium</b> 170mg	<b>7%</b>
<b>Total Carbohydrate</b> 30g	<b>11%</b>
Dietary Fiber 2g	<b>7%</b>
Total Sugars 12g	
Includes 12g Added Sugars	<b>24%</b>

<b>Protein</b> 2g	
Vitamin D 0mcg	0%
Calcium 37mg	2%
Iron 0.85mg	4%
Potassium 87mg	2%
Thiamin 0.10mg	8%
Riboflavin 0.10mg	8%
Niacin 1.5mg	10%
Folate 10mcg	2%

\* The % Daily Value (DV) tells you how much a nutrient in a serving of food contributes to a daily diet. 2,000 calories a day is used for general nutrition advice.

**INGREDIENTS:** Whole eggs, brown sugar\*, water, brown rice flour, canola oil\*, pea starch, apple purée, quinoa flakes, glycerin, tapioca syrup, corn starch\*, leavening (sodium acid pyrophosphate, sodium bicarbonate, pea starch, mono calcium phosphate), spices, flax meal, modified cellulose, salt, cellulose, vitamin and mineral blend (niacin, iron, thiamin, riboflavin, folic acid), sunflower lecithin, enzymes, natural flavor.

\*Not a product of genetic engineering

**INSTRUCTIONS:** Keep frozen. Thaw at room temperature or remove from packaging and warm in a microwave for 15-20 seconds. Enjoy!



6 20133 00256 8

NET WT 8.5 OZ. 240g

Pack: 6 per case

Unit Dim.: 6.75"H 6.75"W 2.375"D

Shelf Life: 365 days

**KEEP FROZEN**

# FREEZER WAFFLES



With a chewy outside and fluffy middle, these gems have a wonderful moist texture and really pleasant taste.

We blindfold-tested this New & Improved recipe against the best-selling gluten-free frozen waffle and a massive 78% said they preferred our new recipe. Impressive numbers to boost your sales.

## Original Homestyle



### Nutrition Facts

3 servings per container  
Serving size 2 waffles (74g)

Amount per serving  
**Calories 210**

	% Daily Value*
<b>Total Fat</b> 7g	<b>9%</b>
Saturated Fat 0g	<b>0%</b>
Trans Fat 0g	
<b>Cholesterol</b> 0mg	<b>0%</b>
<b>Sodium</b> 410mg	<b>18%</b>
<b>Total Carbohydrate</b> 38g	<b>14%</b>
Dietary Fiber 4g	<b>14%</b>
Total Sugars 6g	
Includes 5g Added Sugars	<b>10%</b>
<b>Protein</b> 2g	
Vitamin D 0mcg	0%
Calcium 130mg	10%
Iron 1.1mg	6%
Potassium 140mg	2%
Thiamin 0.3mg	25%
Riboflavin 0.22mg	15%
Niacin 3.7mg	25%
Folate 50mcg	10%

\* The % Daily Value (DV) tells you how much a nutrient in a serving of food contributes to a daily diet. 2,000 calories a day is used for general nutrition advice.

**INGREDIENTS:** Water, brown rice flour, potato starch\*, canola oil\*, tapioca starch, cane sugar, white rice flour, cellulose, brown sugar\*, corn starch\*, chickpea flour, sodium bicarbonate, mono calcium phosphate, pea fiber, cream of tartar, sodium acid pyrophosphate, salt, vitamin and mineral blend (niacin, iron, thiamin, riboflavin, folic acid), dextrose\*, modified cellulose, natural flavor.

May contain: Egg

\*Not a product of genetic engineering

**INSTRUCTIONS:** Keep frozen until ready to heat. Heat waffles in toaster on lowest setting until crisp and warm.



NET WT 7.8 OZ. 222g  
Pack: 12 per case  
Unit Dim.: 4.4"H 9.25"W 2.25"D  
Shelf Life: 240 days

KEEP FROZEN



## Cinnamon Brown Sugar Homestyle



### Nutrition Facts

3 servings per container  
Serving size 2 waffles (74g)

Amount per serving  
**Calories 210**

	% Daily Value*
<b>Total Fat</b> 7g	<b>9%</b>
Saturated Fat 0g	<b>0%</b>
Trans Fat 0g	
<b>Cholesterol</b> 0mg	<b>0%</b>
<b>Sodium</b> 410mg	<b>18%</b>
<b>Total Carbohydrate</b> 38g	<b>14%</b>
Dietary Fiber 4g	<b>14%</b>
Total Sugars 6g	
Includes 5g Added Sugars	<b>10%</b>
<b>Protein</b> 2g	
Vitamin D 0mcg	0%
Calcium 130mg	10%
Iron 1.1mg	6%
Potassium 140mg	2%
Thiamin 0.3mg	25%
Riboflavin 0.22mg	15%
Niacin 3.7mg	25%
Folate 50mcg	10%

\* The % Daily Value (DV) tells you how much a nutrient in a serving of food contributes to a daily diet. 2,000 calories a day is used for general nutrition advice.

**INGREDIENTS:** Water, brown rice flour, potato starch\*, canola oil\*, tapioca starch, cane sugar, white rice flour, cellulose, brown sugar\*, corn starch\*, chickpea flour, sodium bicarbonate, mono calcium phosphate, pea fiber, cinnamon, cream of tartar, sodium acid pyrophosphate, salt, vitamin and mineral blend (niacin, iron, thiamin, riboflavin, folic acid), dextrose\*, modified cellulose, natural flavor.

May contain: Egg

\*Not a product of genetic engineering

**INSTRUCTIONS:** Keep frozen until ready to heat. Heat waffles in toaster on lowest setting until crisp and warm.



NET WT 7.8 OZ. 222g  
Pack: 12 per case  
Unit Dim.: 4.4"H 9.25"W 2.25"D  
Shelf Life: 240 days

KEEP FROZEN



## Blueberry Homestyle



### Nutrition Facts

3 servings per container  
Serving size 2 waffles (74g)

Amount per serving  
**Calories 220**

	% Daily Value*
<b>Total Fat</b> 7g	<b>9%</b>
Saturated Fat 0g	<b>0%</b>
Trans Fat 0g	
<b>Cholesterol</b> 0mg	<b>0%</b>
<b>Sodium</b> 410mg	<b>18%</b>
<b>Total Carbohydrate</b> 39g	<b>14%</b>
Dietary Fiber 4g	<b>14%</b>
Total Sugars 7g	
Includes 6g Added Sugars	<b>12%</b>
<b>Protein</b> 2g	
Vitamin D 0mcg	0%
Calcium 130mg	10%
Iron 1.1mg	6%
Potassium 140mg	2%
Thiamin 0.29mg	24%
Riboflavin 0.22mg	17%
Niacin 3.6mg	23%
Folate 50mcg	13%

\* The % Daily Value (DV) tells you how much a nutrient in a serving of food contributes to a daily diet. 2,000 calories a day is used for general nutrition advice.

**INGREDIENTS:** Water, brown rice flour, potato starch\*, canola oil\*, tapioca starch, cane sugar, white rice flour, cellulose, brown sugar\*, corn starch\*, chickpea flour, sodium bicarbonate, mono calcium phosphate, pea fiber, cream of tartar, sodium acid pyrophosphate, salt, vitamin and mineral blend (niacin, iron, thiamin, riboflavin, folic acid), dextrose\*, modified cellulose.

May contain: Egg

\*Not a product of genetic engineering

**INSTRUCTIONS:** Keep frozen until ready to heat. Heat waffles in toaster on lowest setting until crisp and warm.



NET WT 7.8 OZ. 222g  
Pack: 12 per case  
Unit Dim.: 4.4"H 9.25"W 2.25"D  
Shelf Life: 240 days

KEEP FROZEN





Safe and Scrumptious  
**since 1991**

Kinnikinnick Foods has been **pioneering gluten-free and allergy-friendly foods since 1991**. That's three decades of brand loyalty and some of the most popular baked goodies on the market.



Our owners, the Bigam family, eat gluten-free and understand first-hand the need for guaranteed safe and scrumptious baked goodies. It's trust that has customers always coming back for more.

**15,000+** stores in the US and Canada stock our brand, based on a stellar reputation built over the years. We operate two dedicated free from top-allergens bakeries, 150,000 sq ft in total – that's a couple of the biggest gluten-free bakeries in the world. We have over 160 staff.

Our **safety and supply chain protocols** are the most stringent in the business. Our in-house lab tests guarantee all products are **free from gluten, dairy, nuts, peanuts and soy**. Those allergies cover ten to thirteen percent of the US population. A market that grows daily **as allergies rise** and those affected actively seek out our specific niche products.

We're **proudly certified** by the **GFCP, BRC Global, OU Kosher and Snack Safely**.

All products are **free from GMO's**. Four have been approved by the **Non-GMO Project**, with more in the pipeline.

Given the **rise in vegetarian and vegan** diets we recently added **VegeCert** to our list of endorsements; please look for the logo on select packaging.

We're also **embracing trends to plant-based** eating by inventing new products free from egg as well as reformulating popular lines with improved egg-free recipes. With four senior food scientists on our team, we've got a **packed roster of innovation** lined up in new products for the coming year.

And because our customers know we genuinely care about their health, we're one of the only companies to **enrich our breads and buns with vitamins and minerals**; as well as **add fibre and protein** whenever possible.

All in all, when you're looking for gluten-free bakery products, Kinnikinnick is your **safest bet for guaranteed sales** because we're the only brand that truly understands why, for those on restricted diets, the Best Things In Life Are Free From.

